

# About Spondylolisthesis

## OVERVIEW

Here is a look at the two types of spondylolisthesis conditions known as degenerative and isthmic.

## DEGENERATIVE

### STEP 1

In this condition, the joints weaken and become arthritic.

### STEP 2

The vertebra slides forward and the spinal cord becomes distorted. This pinches the nerve root and causes pain.

## SYMPTOMS

Pain may be felt in the back around the site of injury. Pain can also be felt radiating down to legs and feet.

## ISTHMIC

### STEP 1

In this condition, bone above the joint fractures.

### STEP 2

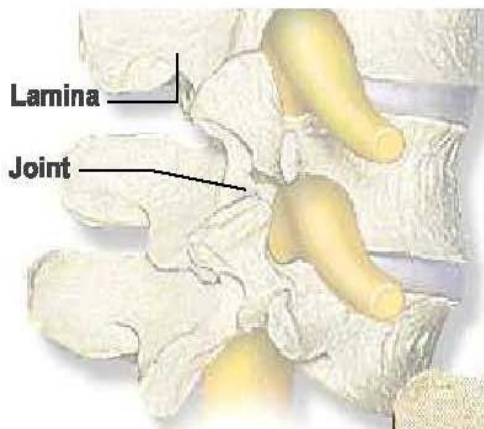
The vertebra slides forward and the spinal cord becomes distorted. This pinches the nerve root and causes pain.

## SYMPTOMS

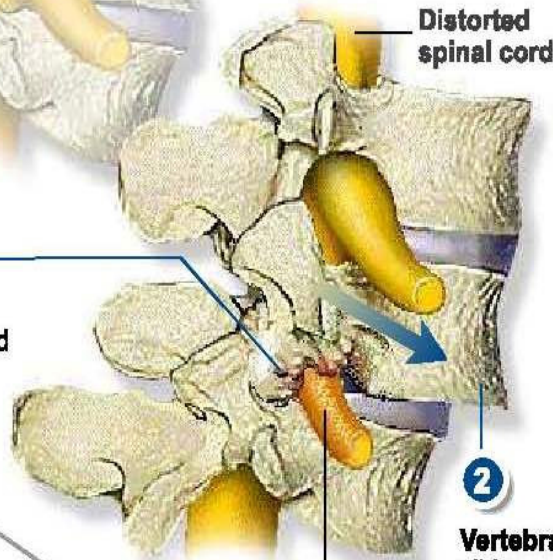
Pain may be felt in the back around the site of injury. Pain can also be felt radiating down to the legs and feet.

## DEGENERATIVE SPONDYLOLISTHESIS

SPINE BEFORE DEGENERATION OCCURS



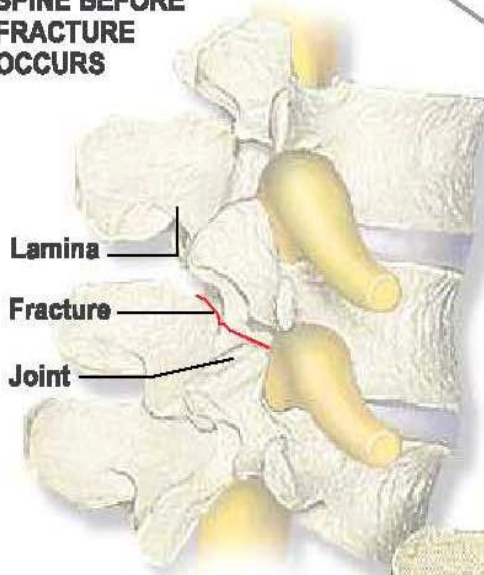
1 Joints weaken and become arthritic.



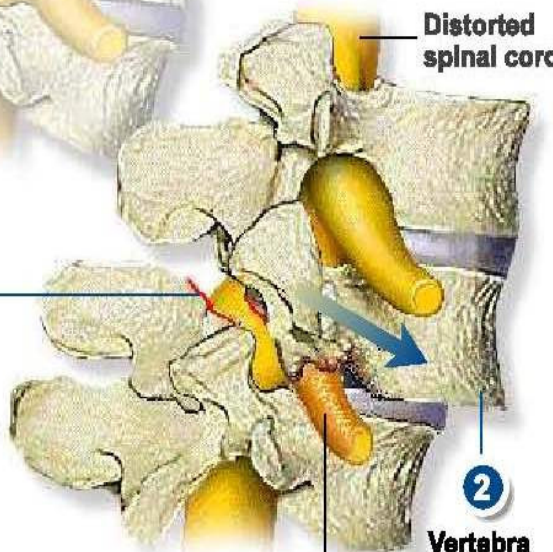
2 Vertebra slides forward.

## ISTHMIC SPONDYLOLISTHESIS

SPINE BEFORE FRACTURE OCCURS



1 Bone above the joint fractures.



2 Vertebra slides forward.