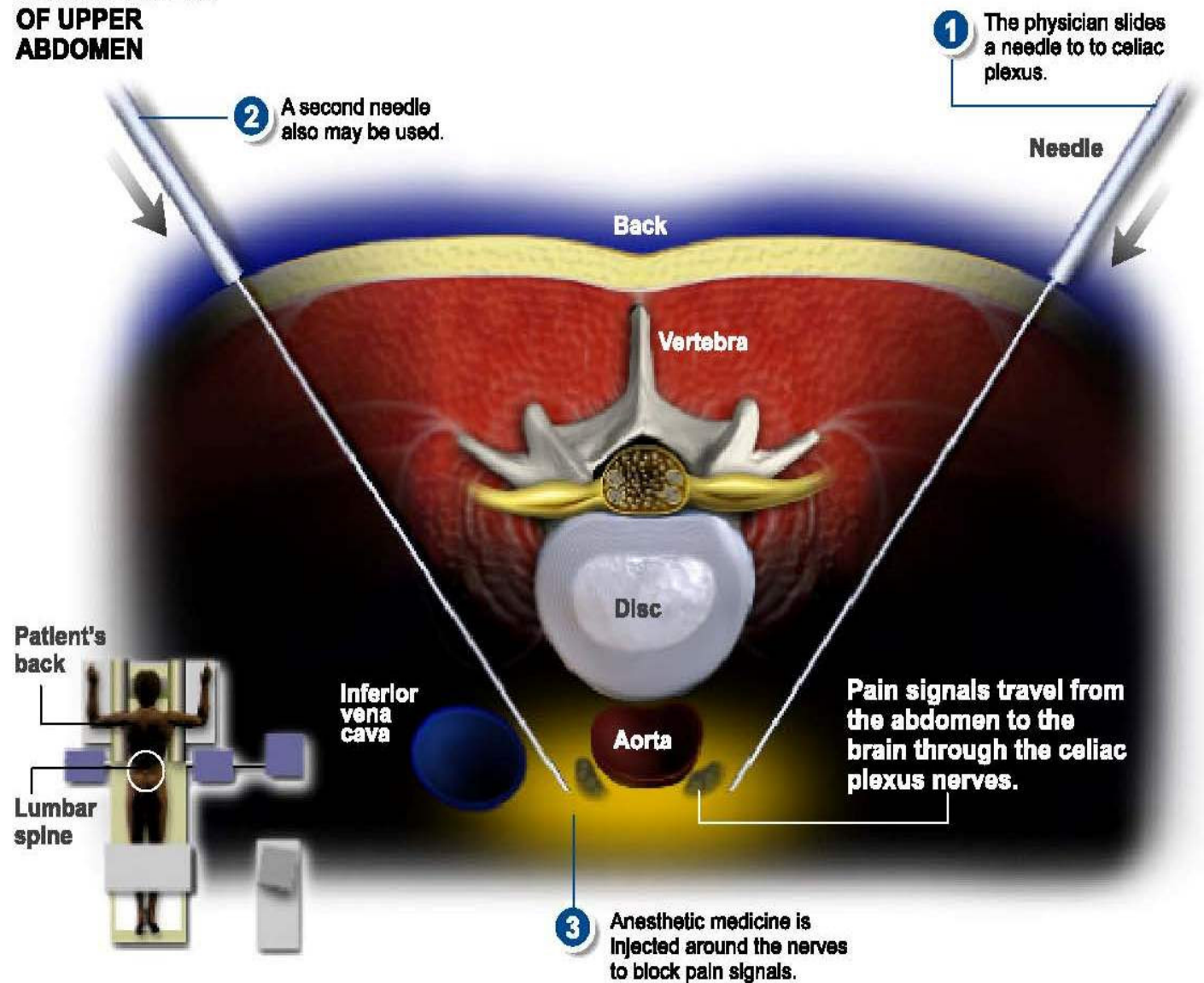


CROSS SECTION OF UPPER ABDOMEN



Celiac Plexus Block

OVERVIEW

This procedure is done to diagnose and reduce abdominal pain caused by conditions such as cancer or pancreatitis. An injection is used to block the nerves serving the abdomen. An intravenous (IV) line may be used to administer medication that relaxes the patient.

STEP 1

After a local anesthetic numbs the skin, the physician slides a needle to celiac plexus. The correct location of the needle tip is confirmed using X-ray or CT scan guidance.

STEP 2

A second needle also may be used. A dye solution may be injected first, to assure the needle is in the correct location.

STEP 3

Anesthetic medicine is injected around the nerves to block pain signals from reaching the brain. The initial injection may be a test injection. If pain relief follows, a permanent block injection may be applied.

END OF PROCEDURE

The needles are removed. Many patients feel immediate pain relief from this procedure.