

BRACING IS A  
PROVEN, EFFECTIVE,  
NON-SURGICAL  
TREATMENT FOR  
SCOLIOSIS

EARLY DETECTION  
AND CORRECT  
TREATMENT LEADS  
TO BETTER  
RESULTS!



**SUPER CORRECTIVE  
NON - SURGICAL  
EFFECTIVE**

## DID YOU KNOW?

In 2013, the New England Journal of Medicine published a multi-center study to determine whether wearing scoliosis braces would prevent the need for spinal correction surgery in children with AIS.

**The study was cut short when early results were overwhelmingly in favor of bracing.**



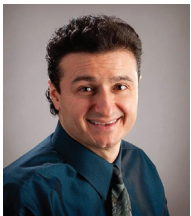
## 3-D SCOLIOSIS BRACING SYSTEM



This study demonstrates that when scoliosis bracing is prescribed for high-risk patients, the need for surgery can be prevented in most cases.

*\*\*Full study available at [www.nejm.org/doi/pdf/10.1056/NEJMoa1307337](http://www.nejm.org/doi/pdf/10.1056/NEJMoa1307337)*

## Barrhaven Family Chiropractic



Dr Kahlid Mankal - D.C

Nepean chiropractor, Dr. Kahlid Mankal welcomes you to Barrhaven Family Chiropractic, where every day that you walk through our doors, you will be greeted by your first name.

Chiropractic is a lifestyle that involves all aspects of wellness. Even though our focus is on NeuroStructural correction, we take into account your lifestyle and make customized recommendations so that you function at your optimal health potential.

Address: 900 Greenbank Road, Ottawa, ON, K2J 1S8  
Phone: (613) 823-7900  
Website: [www.barrhavenchiropractic.ca](http://www.barrhavenchiropractic.ca)

# “Why is ScoliBrace® different?”



ScoliBrace achieves a super corrective position by guiding the body and spine into the opposite alignment of the scoliosis. Curve reduction can be achieved in the majority of cases as well as improvements to rib humping, shoulder levels, and the overall appearance of the body.

## SUPER CORRECTIVE

### 3D DESIGNED FOR A 3D CONDITION

Scoliosis is a 3 Dimensional condition, so effective treatments need to be 3 dimensional too. ScoliBrace is created from 3D body scans in conjunction with x-rays and posture photos. Each brace is then designed using Computer Aided Design (CAD) software and custom made.

### PATIENT FRIENDLY

ScoliBrace opens and closes at the front making it easy to wear and remove without assistance. There is a variety of colors and patterns available for patients to personalise the look of their brace.

## How does the process work?

### 1. 3D BraceScan™

### 2. Custom creation of your ScoliBrace®

### 3. Brace fitting

### 4. Progress reviews and follow-ups



# “How can ScoliBrace® help?”



## ADOLESCENT IDIOPATHIC SCOLIOSIS (AIS)

In adolescents (10-18 years), scoliosis bracing has been shown to be THE MOST EFFECTIVE non-surgical treatment. ScoliBrace moves the patient into a super-corrected position to train the curve towards straight as the child grows.

If applied before or during the growth period, a good correction can be made and maintained. ScoliBrace is also effective in improving the appearance of the body and in many cases eliminates the need for surgery. ScoliBrace comes in a range of colors and patterns, and is designed to be almost invisible under clothing.



## JUVENILE IDIOPATHIC SCOLIOSIS (JIS)

Without the correct treatment Juvenile scoliosis (3-9 years) can progress to severe curves. In most Juvenile cases the ScoliBrace can quickly reduce the curve.

This means that after the first 6 months of treatment Juvenile patients can often continue to wear the ScoliBrace part-time or at night until they reach their adolescent growth spurt.

## ADULT DEGENERATIVE SCOLIOSIS

Adult Scoliosis can originate from a pre-existing adolescent scoliosis, or it can be a new development of scoliosis in adulthood (De Novo Scoliosis). Depending on the type of scoliosis, ScoliBrace can be used to help pain, hold the curve or improve the appearance of the body.



A low profile ScoliBrace that targets the lumbar spine can be used to make the adult ScoliBrace nearly invisible under clothing.

[www.scolibrace.com](http://www.scolibrace.com)